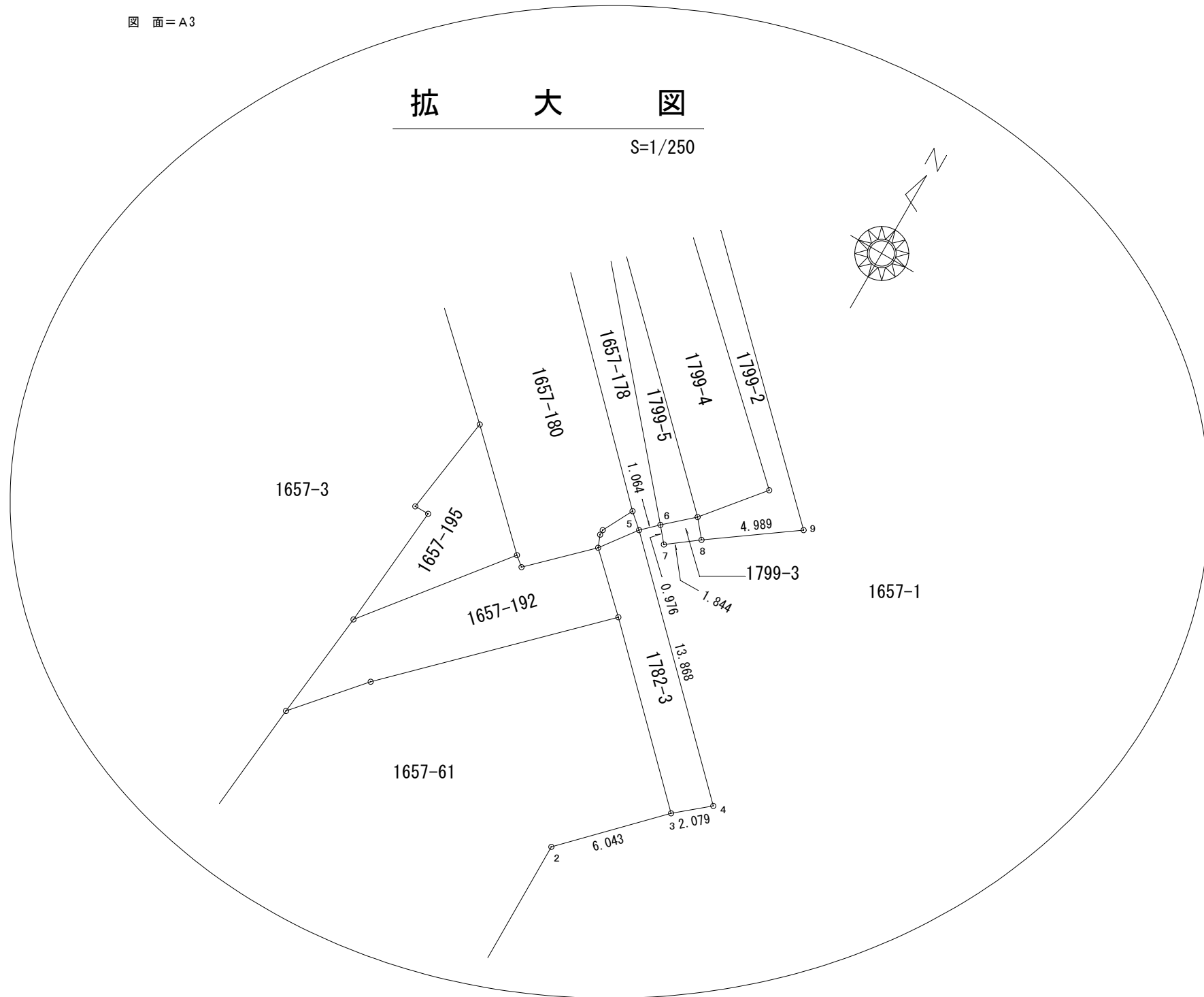


図 面=A3



求積表

地番	① 1657-109			
NO	X _n	Y _n	Y _{n+1} -Y _{n-1}	X _n · (Y _{n+1} -Y _{n-1})
D7	-133653.104	130971.161	49.914	-6671161.033056
37	-133659.198	130966.400	-20.799	2779977.659202
36	-133681.343	130950.362	-14.486	1936507.934698
32	-133682.492	130951.914	37.119	-4962160.420548
31	-133709.036	130987.481	-9.450	1263550.390200
D2	-133767.328	130942.464	-57.508	7692691.498624
D5	-133767.047	130929.973	-20.439	2734064.673633
D6	-133757.649	130922.025	-8.037	1075010.225013
2	-133718.055	130921.936	4.137	-553191.593535
3	-133713.736	130926.162	5.817	-777812.802312
4	-133712.398	130927.753	-8.223	1099517.048754
5	-133702.600	130917.939	-9.049	1209874.827400
6	-133701.860	130918.704	1.395	-186514.094700
7	-133702.606	130919.334	2.098	-280508.067388
8	-133701.490	130920.802	5.531	-739502.941190
9	-133698.595	130924.865	-28.538	3815490.504110
10	-133666.501	130892.264	-43.420	5803799.473420
11	-133655.564	130881.445	22.687	-3032243.780468
12	-133614.311	130914.951	35.041	-4681979.071751
D8	-133612.387	130916.486	56.210	-7510352.273270
合計				15058.156836
合計面積				7529.0784180
地積				7529.07 m ²

NO	② 1657-110			
NO	X _n	Y _n	Y _{n+1} -Y _{n-1}	X _n · (Y _{n+1} -Y _{n-1})
32	-133682.492	130951.914	-22.791	3046757.675172
36	-133681.343	130950.362	14.486	-1936507.934698
37	-133659.198	130966.400	20.799	-2779977.659202
D7	-133653.104	130971.161	6.753	-902559.411312
D9	-133654.588	130973.153	-19.247	2572449.855236
合計				162.525196
合計面積				81.2625980
地積				81.26 m ²

NO	③ 1806-5			
NO	X _n	Y _n	Y _{n+1} -Y _{n-1}	X _n · (Y _{n+1} -Y _{n-1})
32	-133682.492	130951.914	14.328	-1915402.745376
31	-133709.036	130987.481	57.031	-7625560.032116
D10	-133681.242	131008.945	-14.328	1915384.835376
D9	-133654.588	130973.153	-57.031	7622454.808228
合計				-3123.133888
合計面積				1561.5669440
地積				1561.56 m ²

地番	面積
① 1657-109	7529.0784180 m ²
② 1657-110	81.2625980 m ²
③ 1806-5	1561.5669440 m ²

総合計面積	9171.9079600 m ²
-------	-----------------------------